

INF 322T- Children's Literature Fall 2019

Assistant Adjunct Professor:
Marion Rocco



Office: UTA 5.460 (1616 Guadalupe)

Office Hours: Before class or by appointment.

Email: marionrocco@utexas.edu

Email is always the best way to reach me. Since I work as an elementary school librarian during the week, I will do my best to answer emails in the evenings and on weekends.

Class Meets Online

Tuesdays from 6-9 pm at (insert Zoom Link)

Course Description

Children's Literature (INF 322T) is a survey course in the evaluation, selection, and proper and creative use of books and other media with children ages 0 to 14.

Teaching Assistant: The iSchool IT Lab TA Pool

Office:

UTA 1.210 (1616 Guadalupe)

Office Hours:

Monday-Thursday 8:30am to 9:30pm

Telephone:

512-471-3991 DURING OFFICE HOURS ONLY

Email: ta_pool@ischool.utexas.edu

Course Objectives

In this course, students will engage in extensive reading of children's books to:

- ★ develop their capacity to critically read, analyze, and respond to a diverse body of literature
- ★ identify and evaluate the elements of various genres of children's literature
- ★ apply knowledge of children, their development, and interests to the selection and recommendation of appropriate literature
- ★ apply knowledge of selection and evaluation criteria to books created for children
- ★ choose and create activities to use in the K-8 classroom to extend children's knowledge and appreciation for literature

Course Expectations

INF 322T: Children's Literature is not a lecture course. Instead, classes are student-centered and rely heavily on whole class discussions, small group work, and individual writing and reflection. During class, you will be expected to collaborate with your peers, think critically about the course material, and respond to works of children's literature in a variety of ways. Come prepared to participate and to play an active role in your own learning.

While in class, the focus of your attention should be on the course material and assigned classroom activities. Much of the work you do will require the use of a laptop or other device. Plan to use your laptop or other device only for our in-class work. It is considered unprofessional and can also be a distraction to others to use your device for other activities during class.

Be courteous to others during class discussions. All student contributions to the discussion are valued in this course. Students are expected to be respectful of other students and their opinions. (***) Expectations are subject to change for online course)

Attendance

Log- in to all scheduled classes and arrive on time. Late arrivals and early departures are very disruptive.

Students are expected to come prepared to actively participate each and every class.

Attendance will be taken in class each week. In-class activities submitted by a student who does not attend class in-person will receive a grade of 0.

Due Dates & Missed Work

All work must be turned in by the due date. No late work will be accepted.

Partner and group in-class assignments may not be made up if missed.

Individual assignments may be made up in the case of an emergency. A student with an emergency should notify the instructor and present documented evidence of the excuse either before or within 72 hours of an absence.

The term "emergency" is defined as:

1. Serious illness or accident regarding the student, or
2. Death, serious illness, or accident in the student's immediate family.

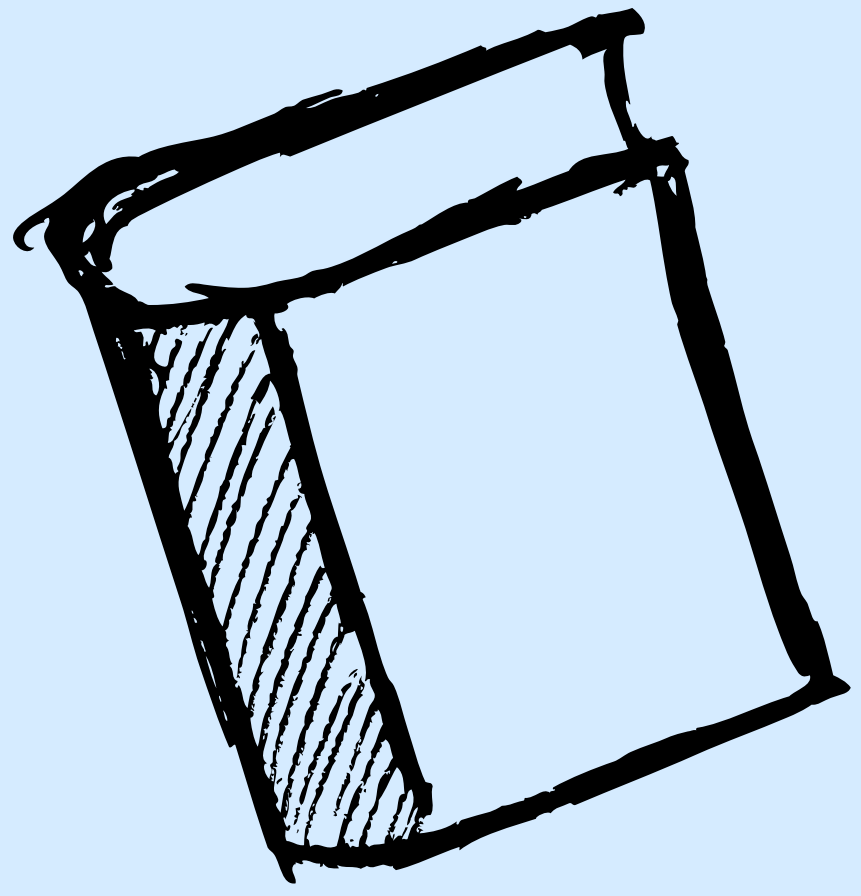
Religious Holidays

By UT Austin policy, a student must provide notification of a pending absence at least fourteen days prior to the date of observance of a religious holy day. The student will be given an opportunity to complete the missed work within a reasonable time after the absence.

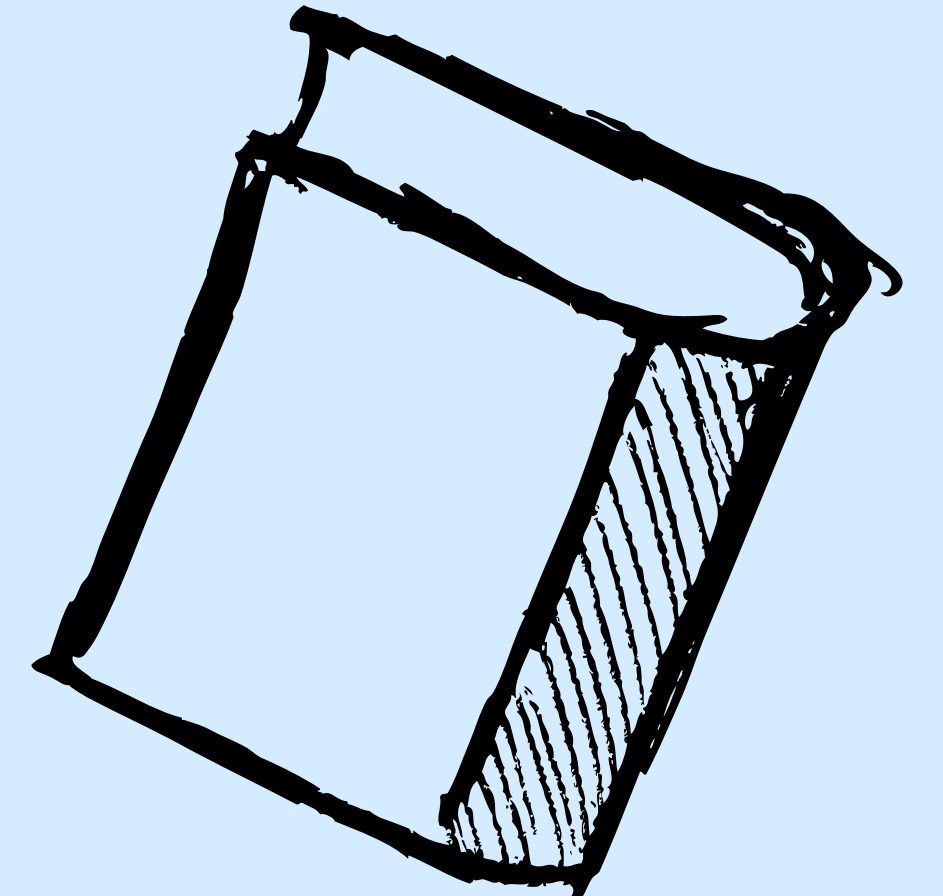
Readings

Required Textbook

Essentials of Children's Literature, 9th ed., (2018), by Kathy G. Short, Carol Lynch-Brown, & Carl M. Tomlinson

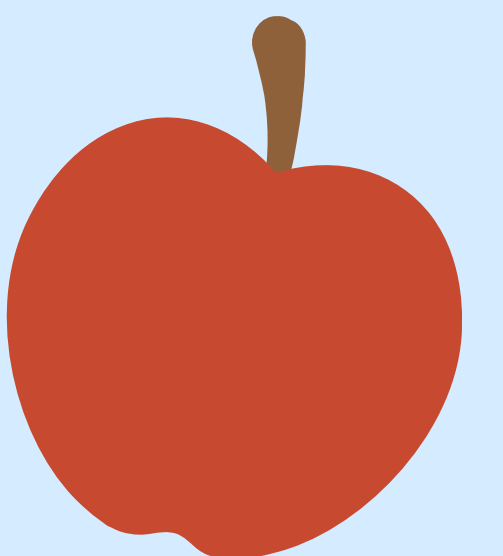
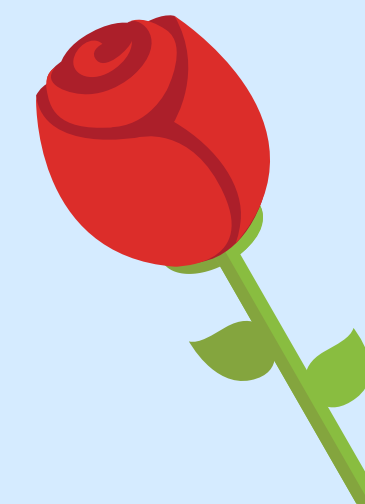
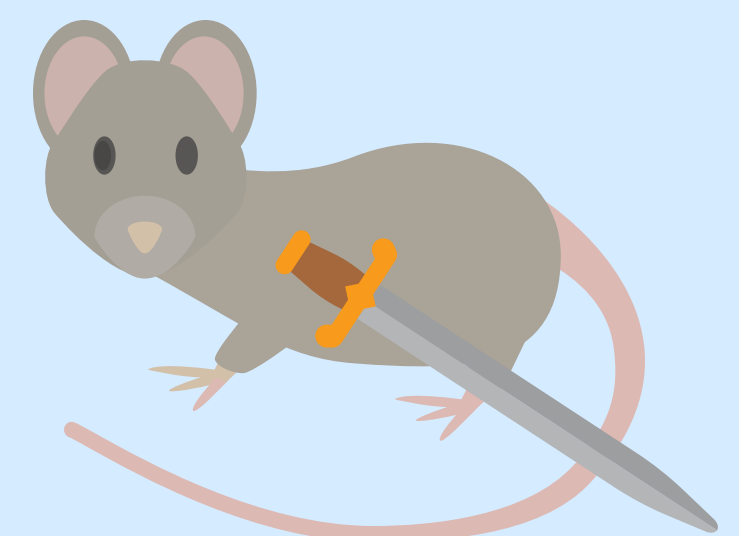
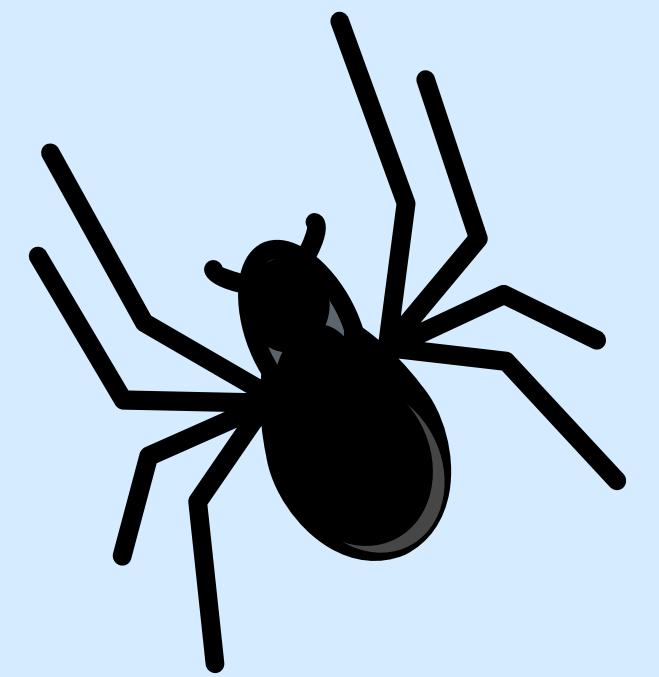


Additional reading assignments will be posted to the weekly modules. There is no printed course packet for this course



Required Children's Books

1. *Charlotte's Web* by E.B. White
2. *The Wednesday Wars* by Gary Schmidt
3. *Harry Potter and the Sorcerer's Stone* by J. K. Rowling
4. *The Crossover* by Kwame Alexander
5. *Wonder* by R.J. Palacio
6. *Better Nate Than Ever* by Tim Federle
7. *The Tale of Despereaux* by Kate DiCamillo
8. *The Giver* by Lois Lowry
9. *Esperanza Rising* by Pam Muñoz Ryan
10. *Brown Girl Dreaming* by Jacqueline Woodson
11. *El Deafo* by Cece Bell



We will read these children's books in the order listed above.



Schedule

AUG

27

Course Introduction; Why Children's Literature Matters

Complete the accompanying module and quiz in Canvas.

SEP

3

Know the Child; Know the Books #1

To prepare for class, read: *Charlotte's Web*. Complete the accompanying module and quiz in Canvas.

SEP

10

Books for Babies & Toddlers; Know the Books #2

To prepare for class, read: *The Wednesday Wars*. Complete the accompanying module and quiz in Canvas. Bring one baby book to class with you.

SEP

17

Writing About Literature; Visual Art Elements & Writing About Art

To prepare for class, read: *Harry Potter and the Sorcerer's Stone*. Complete the accompanying module and quiz in Canvas. Bring one picture book to class with you.

SEP

24

Picture Books; Poetry

To prepare for class, read: *The Crossover*. Complete the accompanying module and quiz in Canvas. Bring one beginning reader to class with you.

OCT

1

Books for Beginning Readers; Reading Aloud

To prepare for class, read: *Wonder*. Complete the accompanying module and quiz in Canvas. Bring one book to read aloud to class with you.

OCT

8

Midterm Exam Administered in Class

Arrive on time and bring a fully charged, internet-connected device.

OCT

15

History of Children's Literature & Current Issues; Realistic Fiction

To prepare for class, read: *Better Nate Than Ever*. Complete the accompanying module and quiz in Canvas.

OCT

22

Traditional Literature

To prepare for class, read: *The Tale of Despereaux*. Complete the accompanying module and quiz in Canvas. Bring one work of traditional literature in picture book format to class with you.

OCT

29

Fantasy; Science Fiction

To prepare for class, read: *The Giver*. Complete the accompanying module and quiz in Canvas.

NOV

5

Historical Fiction and Biography

To prepare for class, read: *Esperanza Rising*. Complete the accompanying module and quiz in Canvas. Bring one biography in picture book format to class with you.

NOV

12

Informational Books

To prepare for class, read: *Brown Girl Dreaming*. Complete the accompanying module and quiz in Canvas. Bring one informational book to class with you.

NOV

19

Censorship & Intellectual Freedom; Graphic Novels

To prepare for class, read: *El Deafo*. Complete the accompanying module and quiz in Canvas. Bring one graphic novel to class with you.

NOV

26

Final Exam Administered in Class

Arrive on time and bring a fully charged, internet-connected device.

Assignments and Grading

Final grades will be determined on the basis of the following rubric. Please note: to ensure fairness, all numbers are absolute and will not be rounded up or down at any stage. Thus, a B- will be inclusive of all scores of 80.000 through 83.999. The University does not recognize the grade of A+.

A = 94-100

A- = 90-93

B+ = 87-89

B = 84-86

B- = 80-83

C+ = 77-79

C = 74-76

C- = 70-73

D+ = 67-69

D = 64-66

D- = 60-63

F = 0-59

Students taking the class CR/F must earn at least a 60 average to earn a CR. (Graduate students must earn at least a 70 average to earn a CR.) The grade of X (incomplete) will be given only in cases of emergencies that have been reported at the time of the emergency.

Grades will be based on:

Quizzes and Book Selections
15%

In-Class Participation and Activities
35%

Project 1
10%

Project 2
10%

Project 3
10%

Project 4
20%

Total
100%

Students With Disabilities Information

The University of Texas at Austin provides, upon request, appropriate academic accommodations for qualified students with disabilities. For more information, contact the Office of the Dean of Students at 512-471-6259 or 512-471-4641 TTY.

Academic Dishonesty

University of Texas rules in regard to academic dishonesty are enforced in this class. Please do not plagiarize, as instances of plagiarism will result in an automatic F (fail) for the entire course.

Assignments

Modules and Quizzes

20 %

Modules for each week's material will be posted on Canvas. These may include readings, videos, and short assignments. Each module will include a brief open-book quiz on the assigned readings. These quizzes must be completed prior to the start of class each day.

In Class Participation and Activities

40 %

We will use our in-class time to build upon the assigned readings and explore the course material in more depth. In most cases, students will be completing individual or small group activities in-class as well as engaging in discussions and group assignments. This work is designed to help you deepen your understanding of the material before completing a graded assignment. *Partner and group in-class assignments may not be made up if missed.*

Students are expected to come prepared to actively participate each and every class. Attendance will be taken in class each week. In-class activities submitted by a student who does not attend class in-person will receive a grade of 0.

Please bring a fully charged, internet connected device as well as the required children's book with you to class each day. For many classes, students will also be asked to bring an additional book with them (from the PCL, Austin Public Library, or other library) to use as part of the in-class assignments.

Midterm and Final Projects

20 % each

The questions for the exams will be taken from materials discussed or viewed in class, assigned readings from the textbook and Canvas, and the required children's books. Students who arrive more than 15 minutes late to an exam will not be allowed to take the exam.

All exams will be administered in class via Canvas. Students are expected to come to class with a fully charged, internet-connected device to take the exams. If a student does not have a smartphone, tablet, or laptop, arrangements may be made in advance with the Professor and TA Pool and a device will be provided. Please pay close attention to the exam dates listed in this syllabus and plan ahead. We will not be able to accommodate students who forget devices! If you have a letter from the Office of the Dean of Students that entitles you to special test taking options, effort will be made to accommodate your needs.

Attendance

Attend all scheduled classes and arrive on time. Late arrivals and early departures are very disruptive.

Students are expected to come prepared to actively participate each and every class. Attendance will be taken in class each week. In-class activities submitted by a student who does not attend class in-person will receive a grade of 0.



Due Dates and Missed Work

All work must be turned in by the due date. No late work will be accepted. Partner and group in-class assignments may not be made up if missed. Individual assignments may be made up in the case of an emergency. A student with an emergency should notify the instructor and present documented evidence of the excuse either before or within 72 hours of an absence. The term “emergency” is defined as:

1. Serious illness or accident regarding the student, or
2. Death, serious illness, or accident in the student’s immediate family.

Religious Holidays

By UT Austin policy, a student must provide notification of a pending absence at least fourteen days prior to the date of observance of a religious holy day. The student will be given an opportunity to complete the missed work within a reasonable time after the absence.

